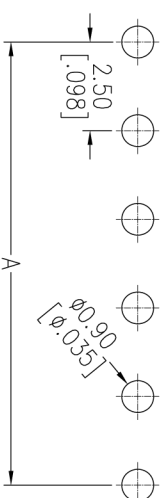
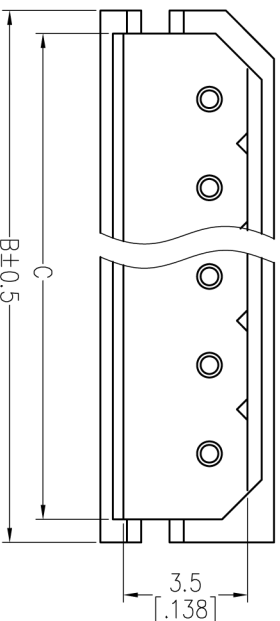


NOTES:

Current Rating: 3.0AMP
 Contact Resistance: 20mΩ max
 Withstand Voltage: 800V AC/Minute
 Insulation Resistance: 1000MΩ min
 Operation Temperature: -25°C to +85°C

Contact Material: Brass
 Contact Plating: Au or Sn over Ni
 Insulator Material: PA66 UL94V-0



Recommended P.C.B Layout(Top Side)
 (PCB BOARD TOLERANCE±0.05)

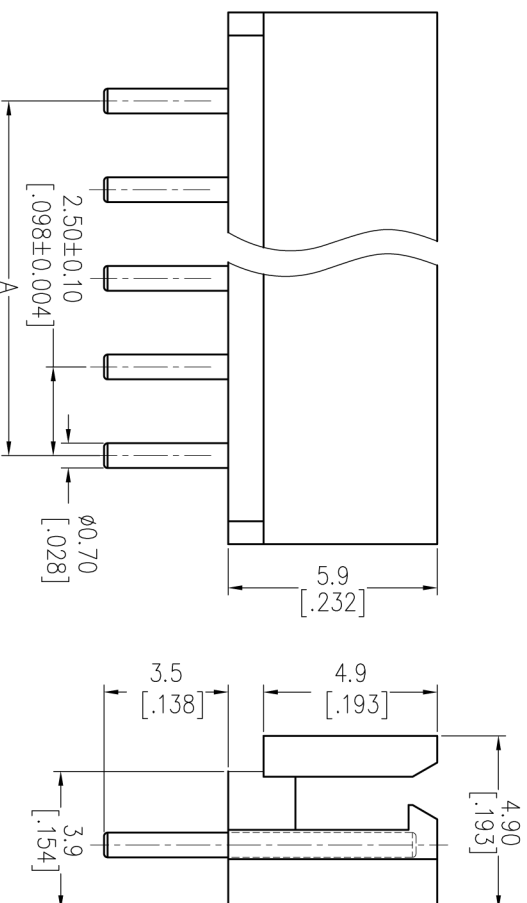
Specification & Ordering Information:

Circuit	Part No.	Dimension		
		A	B	C
02	WF2502-WS02X01	2.5	7.4	6.0
03	WF2502-WS03X01	5.0	9.9	8.5
04	WF2502-WS04X01	7.5	12.4	11.0
05	WF2502-WS05X01	10.0	14.9	13.5
06	WF2502-WS06X01	12.5	17.4	16.0
07	WF2502-WS07X01	15.0	19.9	18.5
08	WF2502-WS08X01	17.5	22.4	21.0
09	WF2502-WS09X01	20.0	24.9	23.5
10	WF2502-WS10X01	22.5	27.4	26.0
11	WF2502-WS11X01	25.0	29.9	28.5
12	WF2502-WS12X01	27.5	32.4	31.0
13	WF2502-WS13X01	30.0	34.9	33.5
14	WF2502-WS14X01	32.5	37.4	36.0
15	WF2502-WS15X01	35.0	39.9	38.5
16	WF2502-WS16X01	37.5	42.4	41.0
17	WF2502-WS17X01	40.0	44.9	43.5
18	WF2502-WS18X01	42.5	47.4	46.0
19	WF2502-WS19X01	45.0	49.9	48.5
20	WF2502-WS20X01	47.5	52.4	51.0

Ordering Information

WF2502 - WS XX X 0 1

No. of pins: 02P~20P
 Contact Plating: S0=Gold Flash/Tin, S3=10u"Gold/Tin, S4=15u"Gold/Tin, S5=30u"Gold/Tin
 Color: B=Black, T=Natural, W=White, E=Beige
 Packing: 0=PE Bag, T=Tube
 G0=Gold Flash, G3=10u"Gold, G4=15u"Gold, G5=30u"Gold
 Blank=Tin



OPERATION	SCALE	FIT
XX ±0.40	mm	1/1
X.XX ±0.25	mm	1/1
X.XXX ±0.15	mm	1/1
Angle ± 3°	mm	1/1
DIM TOL	mm	1/1

OPERATION: XX ±0.40
 CHECK: X.XX ±0.25
 DATE: 2012/08/28

SCALE: mm
 FIT: 1/1

PART NO. SBB TAB
 TITLE: 2.50 WAFER 180°

hf 上海回峰电子科技有限公司
 Shanghai Hui Feng Electronic Technology Co., Ltd

电话: 021-67150229
 传真: 021-67150251
 电子邮箱: huiheng_dzki@163.com
 公司网站: www.huiheng-china.com

REV	DATE	MODIFICATION DESCRIPTION	CHANGE
AO	2012/08/28	NEW	

DATE	DATE	DATE	DATE
2012/08/28	2012/08/28	2012/08/28	2012/08/28

DATE	DATE	DATE	DATE
2012/08/28	2012/08/28	2012/08/28	2012/08/28