

**NOTES:**

1. Electrical Performance:
- 1-1. Current Rating:
  - 2.0A per pin for ;
- 1-2. Withstand Voltage: 1000V AC.
- 1-3. Contact Resistance: 20mΩ Max.
- 1-4. Insulation Resistance: 1000MΩ Min.
- 1-5. Operation Temperature: -55°C to +105°C
2. Material:
  - 2-1. Housing: Pa66, Black; UL-94V-0.
  - 2-2. Contact: Copper alloy, square.
3. Plating:
  - 3-1. Contact: 200u" Min ,Matte Tin Plating  
On overall area, 50u" Min Over Ni .
4. Finish:
  - 4-1. Post type: 02P~24P

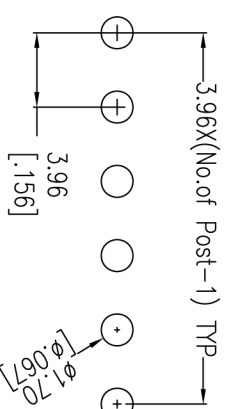
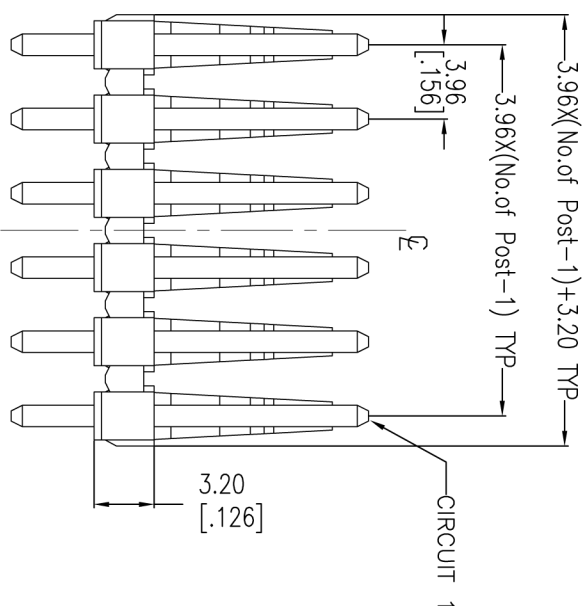
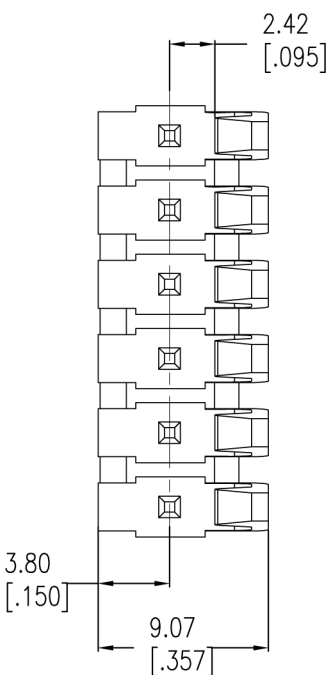
## Ordering Information

WF3968-WS XX X 0 1

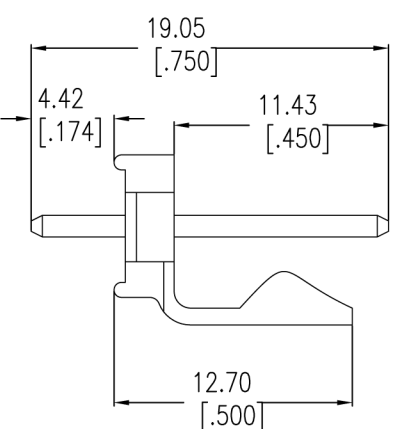
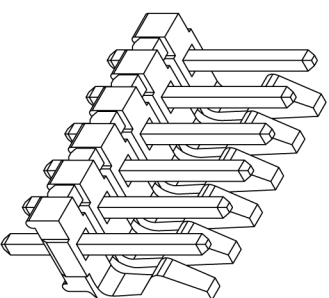
No. of Pins  
02P-15P

Color  
W= White  
B= Black  
U= Blue  
E= Beige

Packing  
0=PE Bag



RECOMMEND PCB LAYOUT  
TOLERANCE IS ±0.05



REV	DATE	MODIFICATION DESCRIPTION	CHANGE	APPROVE	OPERATION	DRAW	MYQ	SCALE	FIT	PROJ.	TITLE:	CUSTOMER NO.
A0	2011.07.15	NEW			X.X	DESIGN	2011.07.15	mm	A4	1/1	WF3968-WSXXX01	
					X.XXX	CHECK					3.96PITCH PIN HEADER	
					X.XXX							
					Angle							
					DIM							
					TOL							

上海回峰电子科技有限公司  
Shanghai Hui Feng Electronic Technology Co., Ltd. 公司网站: www.huifeng-china.com

WF3968-WSXXX01

3.96PITCH PIN HEADER

1 2 3 4 5 6 7 8 9 10

1 2 3 4 5 6 7 8 9 10