

**NOTES:**

Current Rating:0.5AMP  
 Contact Resistance:30mΩ max  
 Withstand Voltage:100V AC/DC  
 Insulation Resistance:500MΩ min  
 Operation Temperature:-40°C to +125°C

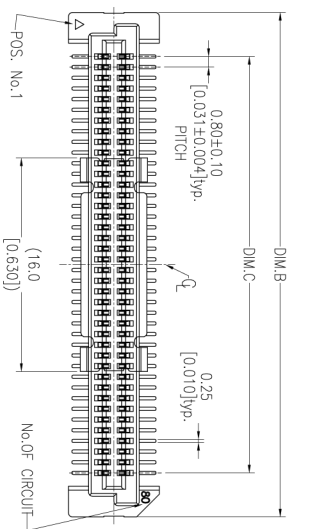
Contact Material:Phosphor Bronze  
 Cap Material:Sn<sub>t=0.25mm</sub>  
 Housing Material:CP(U94V-0) Noture  
 Contact plating:Au and Tin over Ni

Fittness: <80Pins The "M" is 0.12mm MAX  
 ≥80Pins The "M" is 0.15mm MAX

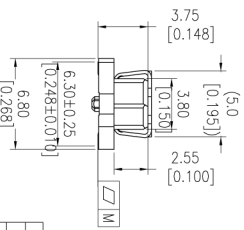
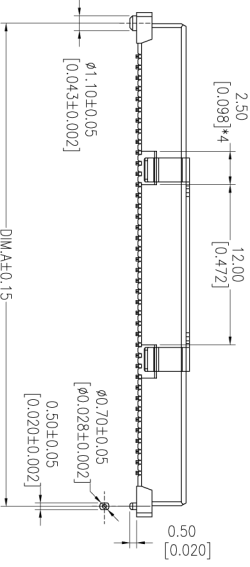
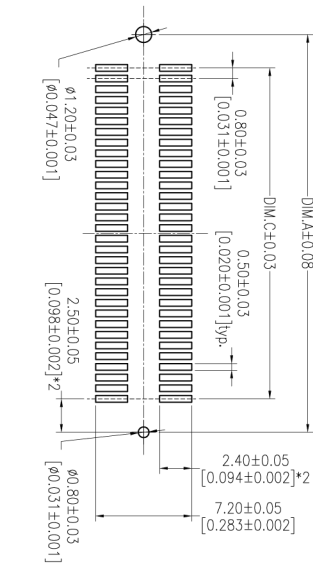
## Ordering Information

3616-S XXXX -037 XX R 01

No. of Pins Housing High Contact Fining R-Type/Keel-CAP  
 SI-S<sub>3</sub>Gold/Tin SI-S<sub>10</sub>Gold/Tin  
 ... Δ Δ



**Recommended P.C.B Layout (Top Side)**  
**(PCB BOARD TOLERANCE ± 0.05)**



79.20	85.80	84.20	200
71.20	77.80	76.20	180
63.20	69.80	68.20	160
55.20	61.80	60.20	140
47.20	53.80	52.20	120
39.20	45.80	44.20	100
31.20	37.80	36.20	80
23.20	29.80	28.20	60
15.20	21.80	20.20	40
DIM.C	DIM.B	DIM.A	PIN NO.

**上海回峰电子科技有限公司**  
 Shanghai Hui Feng Electronic Technology Co., Ltd.

电话: 021-67150229  
 传真: 021-67150251  
 企业邮箱: hui Feng\_dzki@163.com  
 公司网址: www.hui Feng-china.com

		OPERATION	DRAW	DATE	SCALE	FIT	PART NO.
		XXX	±0.40	All en	EMG		3616-SXXX-037XXR01
		XXX	±0.25	CHECK	UNIT	inch	TITLE: 0.80mm B TO B Female
A1	2014/11/07	Modify	XXX	DATE	SIZE	A4	H=3.75 "T" TYPE SMT
A0	2014/06/24	NEW	±0.15	DATE	SHEET	1/2	Customer NO.
REV	DATE	MODIFICATION DESCRIPTION	CHANGE	DATE	PROJ.		